

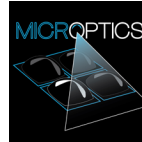
CAB Wall Mount is a combination of security, style and Vandal resistance that blends into any environment.

With 16 LED offering, this luminaire ranges from 21 to 56 watts at beautiful Types 2, 3, 4, and 5 light distribution. Its illuminating glow is produced by Silicone Micro Optics. Kelvin temperature offering of Amber, 2700, 3000, 3500, 4000, and 5000 are available.

It is finished with 3-5 mils of rich-textured powder coat and stainless steel hardware. Conforms to the strictest Made in America standards—designed, tooled, fabricated and assembled in the USA.

**BUY AMERICAN**

To ensure the latest BAA/TAA/BABA Standards are being met, please select BAA, TAA, or BABA in the options section. Please contact the factory before placing an order for any NLS products requesting BAA (Buy American Act), TAA (Trade American Act), or BABA (Build America, Buy America).



**MICRO OPTIC SYSTEM**

Our new cell-enclosed, micro optic silicone modules produce high clarity and outstanding performance.

**LED WATTAGE CHART**

	<b>16L</b>
400 milliamps	21w
530 milliamps	28w
700 milliamps	36w
1050 milliamps	56w

Project Name: \_\_\_\_\_ Type: \_\_\_\_\_

--	--	--	--	--	--	--	--	--

Cat#	Light Dist.	# of LEDs	Milliamps	Kelvin	Volts	Mounting	Color	Options	
CAB-W (CAB-W)	Type 2 (T2)	16L (16L)	400 (40)	Amber 585-600nm (AMBER) ①	120-277 (UNV)	Wall Mount (WM)	Bronze Textured (BRZ)	Marine Grade Finish (MGF)	
	Type 3 (T3)		530 (53)	2700K, 70 CRI (27K7)			White Textured (WHT)	House Side Shield (HSS)	
	Type 4 (T4)		700 (7)	2700K, 80 CRI (27K8) ①			Smooth White Gloss (SWT)	Buy American (BAA) ②	
	Type 5 (T5)		1050 (1)	3000K, 70 CRI (30K7)			Silver (SVR)	Trade American (TAA) ②	
				3000K, 80 CRI (30K8) ①			Black Textured (BLK)	Build America Buy American (BABA) ③	
				3500K, 80 CRI (35K8) ①			Smooth Black Gloss (SBK)	Custom Controls Integration (CCI) ②	
				4000K, 70 CRI (40K7)			Graphite Textured (GPH)		
			4000K, 80 CRI (40K8) ①		5000K, 70 CRI (50K7)			Grey Textured (GRY)	
			5000K, 70 CRI (50K7)		5000K, 80 CRI (50K8) ①			Custom (CS)	

**Notes:**

- ① Consult Factory for Lead Time. Consult Factory for 90 CRI Requests.
- ② Please contact Factory for Custom Control Integration requests (nLight, NX, WaveLinx, Crestron, DMX/RDM, Synapse, Casambi, Dali II, Avi-On, or other control systems)
- ③ Turtle Safe
- ④ Consult factory for all BAA/TAA/BABA requests

# PRODUCT SPECIFICATIONS

## ELECTRICAL

- 120-277 Volts (UNV) or 347-480 Volts (HV)
- 0-10V dimming driver
- Driver power factor at maximum load is  $\geq .95$ , THD maximum load is 15%
- LED Drivers Ambient Temp. Min is  $-40^{\circ}\text{C}$  and Ambient Temp. Max ranges from  $50^{\circ}\text{C}$  to  $55^{\circ}\text{C}$  and, in some cases, even higher. Consult the factory for revalidation by providing the fixture catalog string before quoting and specifying it.
- All internal wiring UL certified for 600 VAC and  $105^{\circ}\text{C}$
- CRI 70, 80 or 90
- Color temperatures: Amber, 2700K, 3000K, 3500K, 4000K, 5000K
- Surge Protection: 20KA supplied as standard.

## CONSTRUCTION

- CAST ALUMINUM

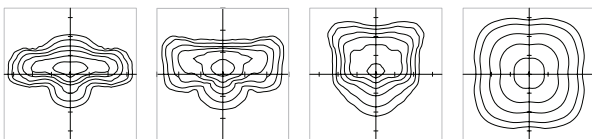
## OPTIONS

- MARINE GRADE FINISH (MGF) - A multi-step process creating protective finishing coat against harsh environments. Chemically washed in a 5 stage cleaning system. Pre-baked, Powder coated 3-5 mils of Zinc Rich Super Durable Polyester Primer. Oven Baked. Finished Powder Coating of Super Durable Polyester Powder Coat 3-5 mil thickness.

## OPTICS

Silicone optics high photo-thermal stability and light output provides higher powered LEDs with minimized lumen depreciation LED life. UV and thermal stability with scratch resistance increases exterior application durability.

- IES Types



TYPE II (T2)

TYPE III (T3)

TYPE IV (T4)

TYPE V (T5)

- Controls Agnostic: Please contact factory for your preferred controls option. (nLight, NX, WaveLinx, Crestron, DMX/RDM, Synapse, Casambi, DALI II, Avi-On, or other control systems)

## FINISH

- 3-5 mils electrostatic powder coat.
- NLS Light's standard high-quality finishes prevent corrosion protects against and extreme environmental conditions

## WARRANTY

Five-year limited warranty for drivers and LEDs.

## BUY AMERICAN OPTION

While all of the NLS Lighting products listed in this document qualify for the Buy America(n) Act of 1933, we reserve the right to change our listings without notice.

The information provided above is for general informational purposes only. We encourage you to consult legal professionals for advice particular to your projects concerning BAA, TAA, BABA or Buy America.

Additional NLS Products that meet BAA, TAA standards can be found at the following link:

<https://nslighting.com/buy-american/>



The information and specifications on this document are subject to change without any notification. All values are design, nominal, typical or prorated values when measured under internal and external laboratory conditions.



701 Kingshill Place, Carson, CA 90746  
Call Us Today (310) 341-2037

[nslighting.com](https://nslighting.com)

# PRODUCT SPECIFICATIONS

**CAB-W LUMEN DATA CHART**

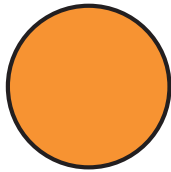
PART NUMBER	T2 OPTIC	Lm/W	B.U.G.	T3 OPTIC	Lm/W	B.U.G.	T4 OPTIC	Lm/W	B.U.G.	T5 OPTIC	Lm/W	B.U.G.	WATTS
CAB-16L-40-27K7	2007	96		1990	95		1937	92		2078	99		21
CAB-16L-40-27K8	1880	90		1863	89		1814	86		1945	93		21
CAB-16L-40-30K8	2015	96		1998	95		1945	93		2086	99		21
CAB-16L-40-30K7	2170	103		2152	102		2094	100		2246	107		21
CAB-16L-40-35K8	2015	96		1998	95		1945	93		2086	99		21
CAB-16L-40-40K8	2170	103		2152	102		2094	100		2246	107		21
CAB-16L-40-40K7	2345	112		2325	111		2263	108		2427	116		21
CAB-16L-40-50K8	2170	103		2152	102		2094	100		2246	107		21
CAB-16L-40-50K7	2345	112		2325	111		2263	108		2427	116		21
CAB-W-16L-53-30K7	2968	106	B1-U3-G1	2940	105	B1-U3-G1	2856	102	B1-U0-G1	3052	109	B2-U3-G1	28
CAB-W-16L-53-40K7	3080	110	B1-U3-G1	3052	109	B1-U3-G1	2968	106	B1-U0-G1	3192	114	B2-U3-G1	28
CAB-W-16L-53-50K7	3192	114	B1-U3-G1	3164	113	B1-U3-G1	3080	110	B1-U0-G1	3304	118	B2-U3-G1	28
CAB-W-16L-7-30K7	3816	106	B1-U3-G1	3780	105	B1-U3-G1	3672	102	B1-U0-G1	3924	109	B3-U3-G1	36
CAB-W-16L-7-40K7	3960	110	B1-U3-G1	3924	109	B1-U3-G1	3816	106	B1-U0-G1	4104	114	B3-U3-G1	36
CAB-W-16L-7-50K7	4104	114	B1-U3-G1	4068	113	B1-U3-G1	3960	110	B1-U0-G1	4248	118	B3-U3-G1	36
CAB-W-16L-1-30K7	5936	106	B1-U3-G1	5880	105	B1-U3-G1	5712	102	B1-U0-G2	6104	109	B3-U3-G1	56
CAB-W-16L-1-40K7	6160	110	B1-U3-G1	6104	109	B2-U3-G2	5936	106	B1-U0-G2	6384	114	B3-U3-G1	56
CAB-W-16L-1-50K7	6384	114	B1-U3-G1	6328	113	B1-U3-G1	6160	110	B1-U0-G2	6608	118	B3-U3-G1	56

**LUMEN MAINTENANCE DATA**

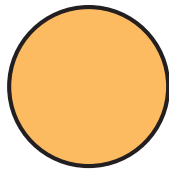
Ambient Temperature	Drive Current	L90 Hours*	L70 Hours**	30,000 Hours*	50,000 Hours*	60,000 Hours*	100,000 Hours**
25°C	Up to 700mA	58,000	173,000	95.7%	91.6%	89.6%	82.1%
	1050mA	38,000	96,000	93.0%	85.4%	81.8%	68.8%

\*Reported extrapolations per IESNA TM-21      \*\*Projected extrapolations per IESNA TM-21

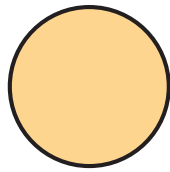
## LED KELVIN RANGE



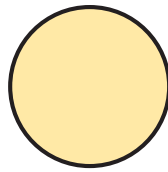
**AMBER**  
585-600 nm



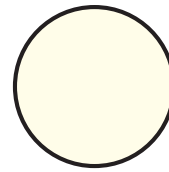
2700K 70 CRI



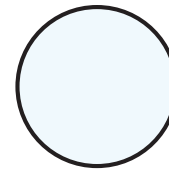
3000K 70 CRI



3500K 80 CRI



4000K 70 CRI



5000K 70 CRI

Color	Dominant or Peak Wavelength Range (nm)	
	Minimum	Maximum
Amber	585	600

# PRODUCT SPECIFICATIONS

DIMENSION	CAB-W
<b>A</b>	13.27"
<b>B</b>	19"
<b>C</b>	6"

<b>EPA</b>	1.02
------------	------

