



**LED WATTAGE CHART**

	16L	32L	48L
350 milliamps	-	34w	53w
400 milliamps	21w	-	-
530 milliamps	26w	54w	80w
700 milliamps	33w	71w	104w

The Savannah adds a touch of class and elegance to any Municipal, or Residential Project. Beautiful by day and efficient by night, the Savannah is the perfect street, curbside and pathway solution. Utilizing the latest in LED technology, the Savannah features the patented Star Power optical system with field adjustment capabilities. Savannah's light source facing a residence can be independently concealed by field adjustment so that maximum lighting levels are targeted where needed—on the street, or between fixtures on sidewalks. Also ideal for storefronts alongside the street, Savannah's light source can be easily adjusted on-site allowing light distribution just before a storefront's entrance.

Kelvin temperature offerings include Amber, 2700K, 3000K, 3500K, 4000K and 5000K. The luminaire is powder coated with a textured finish.

The Savannah is available in two different globe designs, three top shades and additional decorative options such as the Filigree + Strut Combo. Shades include 4.38" Cast Finial as standard, powder-coated same finish as fixture. Globe only luminaires have no finial as standard.

**BUY AMERICAN**

To ensure the latest BAA/TAA/BABA Standards are being met, please select BAA, TAA, or BABA in the options section. Please contact the factory before placing an order for any NLS products requesting BAA (Buy American Act), TAA (Trade American Act), or BABA (Build America, Buy America).




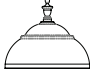
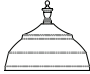

**STAR POWER™ OPTICAL SYSTEM**

The Star Power™ reflector is an excellent system which provides great value and performance. Star Power Patent number: 10168023

Project Name:

Type:

# SAVANNAH-1 ORDERING GUIDE

Cat#	Shade / Lens	Light Dist.	No. of LEDs	Milliamps	Kelvin
Savannah 1 <b>(SVN-1)</b> 	Shade 1 <b>(SH1)</b> 	Type 3 <b>(T3)</b>	16 <b>(16L)</b>	350 <b>(35)</b>	Amber 585-600nm <b>(AMBER)Ⓢ</b>
	Shade 2 <b>(SH2)</b> 	Type 5 <b>(T5)</b>	32 <b>(32L)</b>	400 <b>(40)</b>	2700K, 70 CRI <b>(27K7)</b>
		48 <b>(48L)</b>	530 <b>(53)</b>	2700K, 80 CRI <b>(27K8)Ⓢ</b>	
		700 <b>(7)</b>	3000K, 70 CRI <b>(30K7)</b>		
	Shade 3 <b>(SH3)</b> 				3000K, 80 CRI <b>(30K8)Ⓢ</b>
	Lens Globe 1 <b>(LG1)Ⓢ</b>				3500K, 80 CRI <b>(35K8)Ⓢ</b>
	Lens Globe 2 <b>(LG2)Ⓢ</b>				4000K, 70 CRI <b>(40K7)</b>
				4000K, 80 CRI <b>(40K8)Ⓢ</b>	
				5000K, 70 CRI <b>(50K7)</b>	
				5000K, 80 CRI <b>(50K8)Ⓢ</b>	

Volts	Mounting	Color	Controls	Options
120-277 <b>(UNV)</b>	Post Top Mount	Bronze Textured <b>(BRZ)</b>	Button Photocell <b>(PC)Ⓢ</b>	Opal Lens <b>(OPL)</b>
347-480 <b>(HV)</b>	Over 3" OD Tenon <b>(PT)</b>	White Textured <b>(WHT)</b>	Nema 7-Pin Receptacle <b>(PE7)</b>	Polycarbonate Lens <b>(PLY)</b>
		Smooth White Gloss <b>(SWT)</b>	Photocell + Receptacle <b>(PCR)</b>	Decorative Filigree + Strut Combo <b>(FSC)</b>
		Silver <b>(SVR)</b>	Receptacle + Shorting Cap <b>(PER)</b>	House Side Shield <b>(HSS)</b>
		Black Textured <b>(BLK)</b>	Custom Controls Integration <b>(CCI)Ⓢ</b>	Finial <b>(FIN)</b>
		Smooth Black Gloss <b>(SBK)</b>		Terminal Block <b>(TB)</b>
		Graphite Textured <b>(GPH)</b>		Marine Grade Finish <b>(MGF)</b>
		Grey Textured <b>(GRY)</b>		Buy American <b>(BAA)Ⓢ</b>
		Green <b>(GRN)</b>		Trade American <b>(TAA)Ⓢ</b>
		Custom <b>(CS)</b>		Build America Buy American <b>(BABA)Ⓢ</b>

**Notes:**

- Ⓢ Use With or Without Shade
- Ⓢ Use Without Shade
- Ⓢ Consult Factory for Lead Time. Consult Factory for 90 CRI Requests.
- Ⓢ Universal Voltage 120-277
- Ⓢ Please contact Factory for Custom Control Integration requests (nLight, NX, WaveLinx, Crestron, DMX/RDM, Synapse, Casambi, Dali II, or other control systems)
- Ⓢ Turtle Safe
- Ⓢ Consult factory for all BAA/TAA/BABA requests



701 Kingshill Place, Carson, CA 90746  
 Call Us Today (310) 341-2037

nlsighting.com

# PRODUCT SPECIFICATIONS

## ELECTRICAL

- 120-277 Volts (UNV) or 347-480 Volts (HV)
- 0-10V dimming driver
- Driver power factor at maximum load is  $\geq .95$ , THD maximum load is 15%
- LED Drivers Ambient Temp. Min is  $-40^{\circ}\text{C}$  and Ambient Temp. Max ranges from  $50^{\circ}\text{C}$  to  $55^{\circ}\text{C}$  and, in some cases, even higher. Consult the factory for revalidation by providing the fixture catalog string before quoting and specifying it.
- All internal wiring UL certified for 600 VAC and  $105^{\circ}\text{C}$
- CRI 70, 80 or 90
- Color temperatures: Amber, 2700, 3000K, 3500K, 4000K, 5000K
- Surge Protection: 20KA supplied as standard.

## CONSTRUCTION

- Cast Aluminum

## OPTIONS

- Opal Lens
- Polycarbonate Lens
- Decorative Filigree + Strut Combo
- House Side Shield
- Finial
- Terminal Block
- MARINE GRADE FINISH (MGF) - A multi-step process creating protective finishing coat against harsh environments. Chemically washed in a 5 stage cleaning system. Pre-baked, Powder coated 3-5 mils of Zinc Rich Super Durable Polyester Primer. Oven Baked. Finished Powder Coating of Super Durable Polyester Powder Coat 3-5 mil thickness.

House Side Shield (HSS) is designed for full property line cut-off.

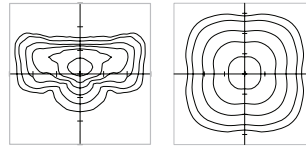
## CONTROL OPTIONS

- NEMA 7-PIN RECEPTACLE (PE7)—An ANSI C136.41-2013 receptacle provides electrical and mechanical interconnection between photo control cell and luminaire. Dimming receptacle available two or four dimming contacts supports 0-10 VDC dimming methods or Digital Addressable Lighting Interface (DALI), providing reliable power interconnect.
- PHOTOCELL + RECEPTACLE (PCR)—7-Pin Receptacle and Electronic Twist Lock Photocell for dusk to dawn operation.
- RECEPTACLE + SHORTING CAP (PER)—7-Pin Receptacle and Shorting Cap.
- PHOTOCELL - Button type photocell.
- Controls Agnostic: Please contact factory for your preferred controls option. (nLight, NX, WaveLinx, Crestron, DMX/RDM, Synapse, Casambi, DALI II, Avi-On, or other control systems)

## OPTICS

Recessed Star Power Optical System is 95% reflective material. Utilizes a linear diffused pattern, softening the light distribution and eliminating any dark shadows or striations.

- IES Types



TYPE III (T3)

TYPE V (T5)

## FINISH

- 3-5 mils electrostatic powder coat.
- NLS Lighting standard high-quality finishes prevent corrosion and protects against extreme environmental conditions

## WARRANTY

Five-year limited warranty for drivers and LEDs.

## LISTINGS

- Certified to UL 1598
- UL 8750
- CSA C22.2 No. 250.0
- 3G Rated

## BUY AMERICAN OPTION

While all of the NLS Lighting products listed in this document qualify for the Buy America(n) Act of 1933, we reserve the right to change our listings without notice.

The information provided above is for general informational purposes only. We encourage you to consult legal professionals for advice particular to your projects concerning BAA, TAA, BABA or Buy America.

Additional NLS Products that meet BAA, TAA standards can be found at the following link:

<https://nslighting.com/buy-american/>



The information and specifications on this document are subject to change without any notification. All values are design, nominal, typical or prorated values when measured under internal and external laboratory conditions.



701 Kingshill Place, Carson, CA 90746  
Call Us Today (310) 341-2037

[nslighting.com](https://nslighting.com)

# PRODUCT SPECIFICATIONS

## SAVANNAH LUMEN DATA CHART

PART NUMBER	T3 LUMENS	T3 LM/W	T5 LUMENS	T5 LM/W	Watts
SVN-X-16L-40-27K7	1896	90	1929	92	21
SVN-X-16L-40-27K8	1775	85	1807	86	21
SVN-X-16L-40-30K8	1903	91	1937	92	21
SVN-X16L-40-30K7	2050	98	2086	99	21
SVN-X-16L-40-35K8	1903	91	1937	92	21
SVN-X-16L-40-40K8	2050	98	2086	99	21
SVN-X-16L-40-40K7	2215	105	2254	107	21
SVN-X-16L-40-50K8	2050	98	2086	99	21
SVN-X-16L-40-50K7	2215	105	2254	107	21
SVN-16L-53-30K7	2444	94	2496	96	26
SVN-16L-53-40K7	2522	97	2600	100	26
SVN-16L-53-50K7	2626	101	2704	104	26
SVN-16L-7-30K7	3102	94	3168	96	33
SVN-16L-7-40K7	3201	97	3300	100	33
SVN-16L-7-50K7	3333	101	3432	104	33
SVN-32L-35-30K7	3196	94	3264	96	34
SVN-32L-35-40K7	3298	97	3400	100	34
SVN-32L-35-50K7	3434	101	3536	104	34
SVN-32L-53-30K7	5076	94	5184	96	54
SVN-32L-53-40K7	5238	97	5400	100	54
SVN-32L-53-50K7	5454	101	5616	104	54
SVN-32L-7-30K7	6674	94	6816	96	71
SVN-32L-7-40K7	6887	97	7100	100	71
SVN-32L-7-50K7	7171	101	7384	104	71
SVN-48L-35-30K7	4982	94	5088	96	53
SVN-48L-35-40K7	5141	97	5300	100	53
SVN-48L-35-50K7	5353	101	5512	104	53
SVN-48L-53-30K7	7520	94	7680	96	80
SVN-48L-53-40K7	7760	97	8000	100	80
SVN-48L-53-50K7	8080	101	8320	104	80
SVN-48L-7-30K7	9776	94	9984	96	104
SVN-48L-7-40K7	10088	97	10400	100	104
SVN-48L-7-50K7	10504	101	10816	104	104

## SAVANNAH LUMEN DATA CHART WITH SHADE

PART NUMBER	T3 LUMENS	T3 LM/W	T5 LUMENS	T5 LM/W	Watts
SVN-X-16L-40-27K7	1679	80	1730	82	21
SVN-X-16L-40-27K8	1573	75	1620	77	21
SVN-X-16L-40-30K8	1686	80	1737	83	21
SVN-X16L-40-30K7	1816	86	1870	89	21
SVN-X-16L-40-35K8	1686	80	1737	83	21
SVN-X-16L-40-40K8	1816	86	1870	89	21
SVN-X-16L-40-40K7	1962	93	2021	96	21
SVN-X-16L-40-50K8	1816	86	1870	89	21
SVN-X-16L-40-50K7	1962	93	2021	96	21

### Lumen Maintenance Data

Ambient Temperature	Drive Current	L90 Hours*	L70 Hours**	30,000 Hours*	50,000 Hours*	60,000 Hours*	100,000 Hours**
25°C	Up to 700mA	58,000	173,000	95.7%	91.6%	89.6%	82.1%
*Reported extrapolations per IESNA TM-21				**Projected extrapolations per IESNA TM-21			

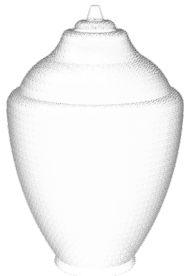


701 Kingshill Place, Carson, CA 90746  
Call Us Today (310) 341-2037

nlsighting.com

# PRODUCT SPECIFICATIONS

## LENS GLOBES



**LENS GLOBE 1**



**LENS GLOBE 2**

## SHADES



**SHADE 1**



**SHADE 2**

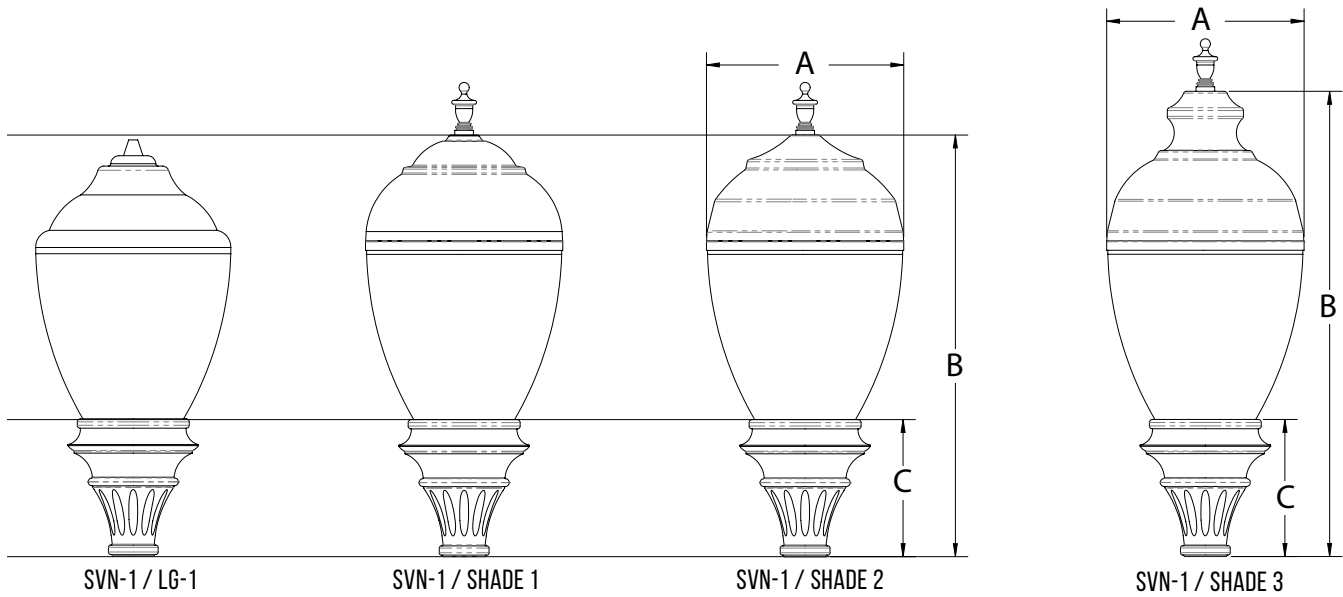


**SHADE 3**

# PRODUCT SPECIFICATIONS

DIMENSIONS			
	A	B	C
SVN-1/LG-1	15.88 in	33.83 in	11 in
SVN-1/SH1	15.88 in	33.83 in	11 in
SVN-1/SH2	15.88 in	33.83 in	11 in
SVN-1/SH3	15.88 in	37.33 in	11 in

<b>WEIGHT</b>	<b>28 LBS.</b>
<b>EPA</b>	<b>4.07</b>



Standard  
Cast Finial  
for Shades