

FORM AND FUNCTION

- Sleek, low profile housing
- Engineered for optimum thermal management
- Low depreciation rate
- Optical system designed for:
 - Parking Lots
 - Commercial Applications

CONSTRUCTION

- Die Formed heavy duty Aluminum
- Corrosion resistant external hardware
- One-piece silicone gasket ensures IP-65 seal for electronics compartment
- Two-piece silicone Micro Optic system ensures IP-67 level seal around each PCB

FINISH

- 3-5 mils electrostatic powder coat.
- NLS' standard high-quality finishes prevent corrosion protects against extreme environmental conditions

WARRANTY

Five-year limited warranty for drivers and LEDs.



LISTINGS

- Certified to UL 1598
- CSA C22.2 No. 250.0
- DesignLights Consortium® (DLC)
- DesignLights Consortium Premium® (DLCP)
- IP65/ IP67 Rated



LED WATTAGE CHART

	32L	48L	64L
350 milliamps	-	-	-
530 milliamps	-	-	-
700 milliamps	71w	104w	136w
1050 milliamps	106w	156w	205w

Project Name: _____ Type: _____

Cat #	Light Dist.	No. of LEDs	Milliamps	Kelvin	Volts	Mounting	Color	Options
Value Series Square 1 (VSS-1)	Type 2 (T2)	32 (32L) 48 (48L) 64 (64L)	700 (7)	3000K (30K)	120-277 (UNV)	Spider Mount Over 21" Tenon (SPM2) Over 3" Tenon (SPM3)	Bronze (BRZ)	Bird Spikes (BS) Marine Grade Finish (MGF) Surge Protector (10K) Nema 7-Pin Receptacle (PE7)
	Type 3 (T3)		1050 (1)	4000K (40K)	340-480 (HV)		White (WHT)	Photocell (PC) *Universal Voltage 120-277
	Type 4 (T4)			5000K (50K)			Silver (SVR)	Photocell + Receptacle (PCR) Motion Sensor (MS)
	Type 5 (T5)						Black (BLK)	FSP-211 with Motion Sensor (UNV Voltage) For 8' + Below (FSP-8) For 9' to 20' (FSP-20) For 21' to 40' (FSP-40) *Motion Sensor and FSP-211 are integral to the fixture
								Graphite (GPH)
							Grey (GRY)	Quick Mount Bracket (QMB) Retrofit Quick Mount Bracket (RQMB) Rotate Optic Right (ROR) Rotate Optic Left (ROL)
							Custom (CS)	Round Pole Adaptor 3"-4" Pole (RPA4) Round Pole Adaptor 5"-6" Pole (RPA5) House Side Shields (HSS) *HSS not applicable with N3 - NEMA 30" Optics Automotive House Side Shield (AHS) Acrylic Optics (AO)

ELECTRICAL

- 120-277 Volts (UNV) or 347-480 Volts (HV)
- 0-10V dimming driver by Philips Advance
- Driver power factor at maximum load is $\geq .95$, THD maximum load is 15%
- All internal wiring UL certified for 600 VAC and 105°C
- All drivers, controls, and sensors housed in enclosed IP-65 compartment
- Lumileds Luxeon MX LED's
- CRI >70
- Color temperatures: 3000K, 4000K, 5000K

OPTIONS

- **BIRD DETERRANT (BD)**—offers effective and humane deterrent for larger bird species and provides cost-effective long-term solution to nuisance bird infestations and protect your property.
- **MARINE GRADE FINISH (MGF)**—A multi-step process creating protective finishing coat against harsh environments.
 - Chemically washed in a 5 stage cleaning system.
 - Pre-baked
 - Powder coated 3-5 mils of Zinc Rich Super Durable Polyester Primer.
 - 1-2 feet inside pole coverage top and bottom.
 - Oven Baked.
 - Finished Powder Coating of Super Durable Polyester Powder Coat 3-5 mil thickness.
- **SHIELDS (HSS, AHS)**—House Side Shield (HSS) is designed for full property line cut-off. Automotive House Side Shield (AHS) is a single-sided shield allowing partial cut-off on either side or front of luminaire.
- **ROUND POLE ADAPTER (RPA)**— When using round poles, specify Round Pole Adapter (RPA). Specify RPA4 when installing on 3"-4" round poles, and RPA5 when installing on 5"-6" round poles.

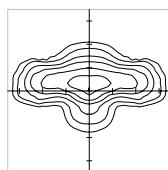
CONTROLS

- **FSP-211 (FSP-X)**—Passive infrared (PIR) sensor providing multi-level control based on motion/daylight contribution.
 - All control parameters adjustable via wireless configuration remote storing and transmitting sensor profiles.
 - FSP-8 mounting heights 8 feet and below.
 - Includes 5 dimming event cycles, 0-10V dimming with motion sensing, reprogrammable in the field.
- **NEMA 7-PIN RECEPTACLE (PE7)**—An ANSI C136.41-2013 receptacle provides electrical and mechanical interconnection between photo control cell and luminaire. Dimming receptacle available two or four dimming contacts supports 0-10 VDC dimming methods or Digital Addressable Lighting Interface (DALI), providing reliable power interconnect.

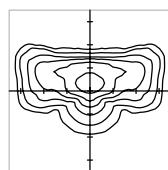
OPTICS

Silicone optics high photothermal stability and light output provides higher powered LEDs with minimized lumen depreciation LED life. UV and thermal stability with scratch resistance increases exterior application durability.

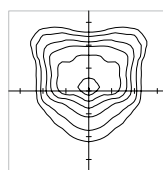
- IES Types



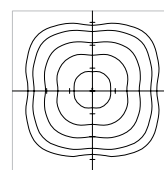
TYPE II (T2)



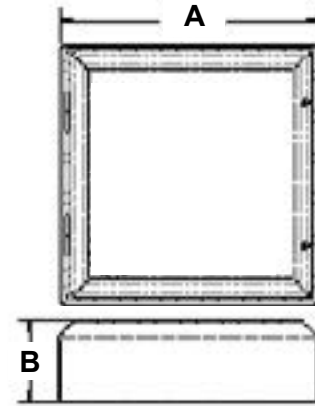
TYPE III (T3)



TYPE IV (T4)



TYPE V (T5)

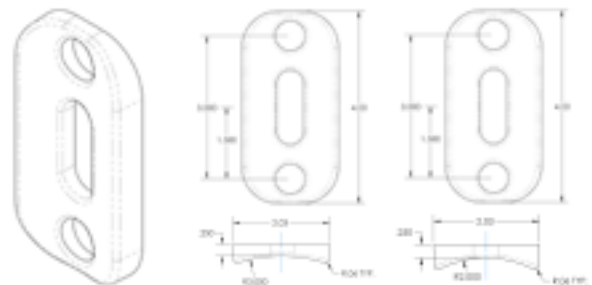


DIMENSION	VSS-1
A	17 in. SQ
B	5 in.
Weight	23 lbs

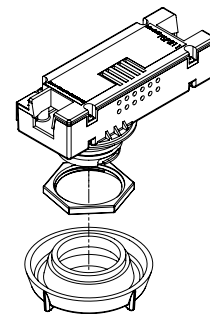
HOUSE SIDE SHIELD AUTOMOTIVE HOUSE SIDE SHIELD



RPA4 / RPA5

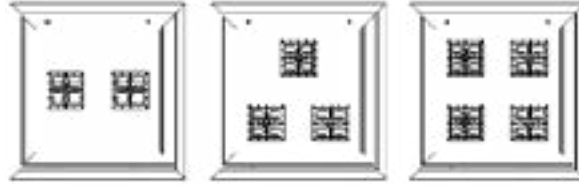


FSP-211



OPTICAL CONFIGURATIONS

Rotatable Optics (ROR) Rotated Right, (ROL) Rotated Left options available. Optics field and factory rotatable.



VSS-1 / 32L

VSS-1 / 48L

VSS-1 / 64L

LUMENS

PART NUMBER	T2	LM/W	DLC	BUG	T3 HSS	LM/W	BUG	T3	LM/W	DLC	BUG	T4 AHS	LM/W	T4 HSS	LM/W	BUG	T4	LM/W	DLC	BUG	T5	LM/W	DLC	BUG	Watts
VSS-1-32L-7-30K	7384	104	S	B1-U0-G1	4118	58	B0-U0-G1	7242	102	S	B2-U0-G2	5112	72	4047	57	B0-U0-G1	7668	108	S	B2-U0-G2	8179	115	P	B3-U0-G2	71
VSS-1-32L-7-40K	8023	113	P	B2-U0-G2	4402	62	B0-U0-G1	7952	112	P	B2-U0-G2	5396	76	4331	61	B0-U0-G1	8307	117	P	B2-U0-G2	8946	126	P	B3-U0-G2	71
VSS-1-32L-7-50K	8662	122	P	B2-U0-G2	4686	66	B0-U0-G1	8520	120	P	B2-U0-G2	5680	80	4615	65	B0-U0-G2	8946	126	P	B2-U0-G2	9585	135	P	B3-U0-G2	71
VSS-1-32L-1-30K	10706	101	S	B2-U0-G2	6148	58	B0-U0-G2	10600	100	S	B2-U0-G2	7632	72	6042	57	B0-U0-G2	10812	102	S	B2-U0-G2	11125	105	S	B4-U0-G2	106
VSS-1-32L-1-40K	11660	110	S	B2-U0-G2	6572	62	B0-U0-G2	11554	109	S	B2-U0-G2	8056	76	6466	61	B0-U0-G2	11766	111	S	B2-U0-G2	12190	115	S	B4-U0-G2	106
VSS-1-32L-1-50K	12508	118	S	B2-U0-G2	6996	66	B0-U0-G2	12402	117	P	B2-U0-G2	8480	80	6890	65	B0-U0-G2	12508	118	S	B2-U0-G2	13144	124	P	B4-U0-G2	106
VSS-1-48L-7-30K	10816	104	S	B2-U0-G2	6032	58	B0-U0-G2	10712	103	S	B2-U0-G2	7488	72	5928	57	B0-U0-G2	11232	108	S	B2-U0-G2	12272	118	P	B4-U0-G2	104
VSS-1-48L-7-40K	11752	113	S	B2-U0-G2	6448	62	B0-U0-G2	11648	112	S	B2-U0-G2	7904	76	6344	61	B0-U0-G2	12168	117	S	B2-U0-G2	13312	128	P	B4-U0-G2	104
VSS-1-48L-7-50K	12688	122	P	B2-U0-G2	6864	66	B0-U0-G2	12480	120	P	B2-U0-G2	8320	80	6760	65	B0-U0-G2	13104	126	P	B3-U0-G3	14248	137	P	B4-U0-G2	104
VSS-1-48L-1-30K	16559	106	S	B3-U0-G3	9048	58	B0-U0-G2	15756	101	S	B3-U0-G3	11232	72	8892	57	B1-U0-G2	15912	102	S	B3-U0-G3	16536	106	S	B4-U0-G2	156
VSS-1-48L-1-40K	17160	110	S	B3-U0-G3	9672	62	B1-U0-G2	17004	109	S	B3-U0-G3	11856	76	9516	61	B1-U0-G2	17316	111	S	B3-U0-G3	17940	115	S	B4-U0-G2	156
VSS-1-48L-1-50K	18408	118	P	B3-U0-G3	10296	66	B1-U0-G2	18252	117	P	B3-U0-G3	12480	80	10140	65	B1-U0-G2	18408	118	P	B3-U0-G3	19188	123	P	B4-U0-G2	156
VSS-1-64L-7-30K	14144	104	S	B2-U0-G2	7888	58	B0-U0-G2	13736	101	S	B3-U0-G3	9792	72	7752	57	B0-U0-G2	14688	108	S	B3-U0-G3	16048	118	S	B4-U0-G2	136
VSS-1-64L-7-40K	15368	113	S	B3-U0-G3	8432	62	B0-U0-G2	14824	109	S	B3-U0-G3	10336	76	8296	61	B1-U0-G2	15912	117	P	B3-U0-G3	17408	128	S	B4-U0-G2	136
VSS-1-64L-7-50K	16592	122	P	B3-U0-G3	8976	66	B0-U0-G2	16048	118	P	B3-U0-G3	10880	80	8840	65	B1-U0-G2	17136	126	P	B3-U0-G3	18632	137	P	B4-U0-G2	136
VSS-1-64L-1-30K	21730	106	S	B3-U0-G3	11890	58	B1-U0-G2	20705	101	S	B3-U0-G3	14760	72	11685	57	B1-U0-G2	20910	102	S	B3-U0-G3	21730	106	S	B5-U0-G3	205
VSS-1-64L-1-40K	22550	110	S	B3-U0-G3	12710	62	B1-U0-G2	22345	109	S	B3-U0-G3	15580	76	12505	61	B1-U0-G3	22755	111	S	B3-U0-G3	23575	115	S	B5-U0-G3	205
VSS-1-64L-1-50K	24190	118	P	B3-U0-G3	13530	66	B1-U0-G2	23780	116	P	B3-U0-G3	16400	80	13325	65	B1-U0-G3	24190	118	P	B3-U0-G4	25215	123	P	B5-U0-G3	205

*DLC S= Standard
P= Premium

L70/L90 DATA

Temp.	VSS-1	
	L70	L90
25°C	483,000	>60,000
50°C	180,000	>60,000

EPA

EPA	SGL	D90	D180	T90	T120	QD
VSS-1	0.90	1.52	1.80	2.34	2.43	2.34

MOUNTING OPTIONS



SPIDER MOUNT (SPMX)

Aluminum, 4-bar spider arm mounts over round tenon at two outer dimensions.

- Over 2-3/8" (SPM2)
- Over 3" (SPM3)